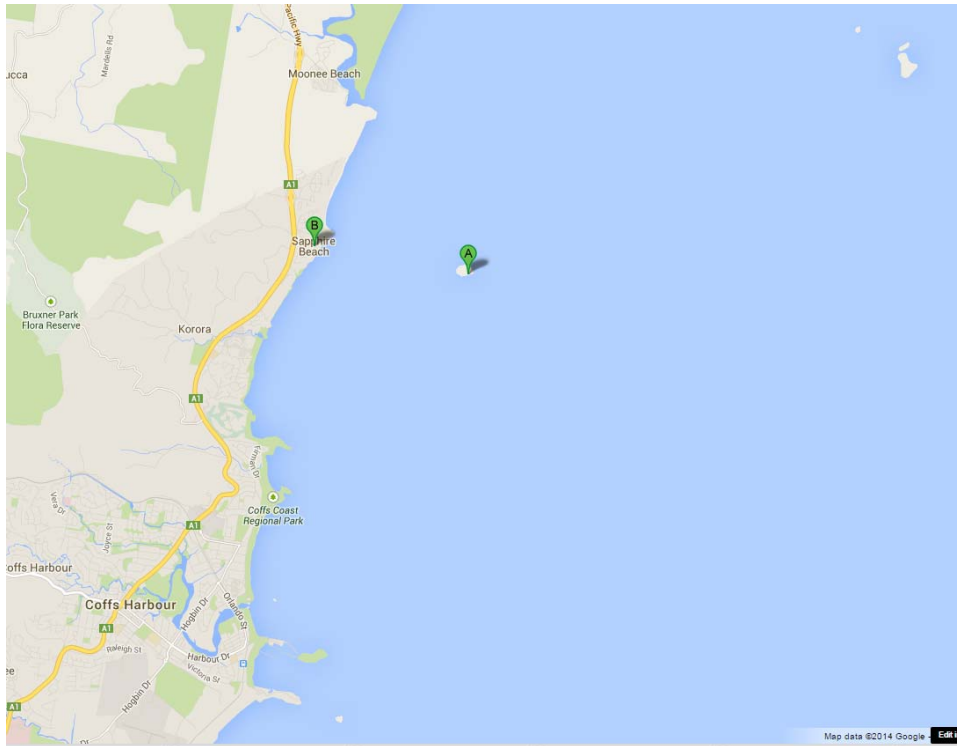


SITE ASSESSMENT:

Location/ Site:	Split Solitary and Spit Bommie, Solitary islands
GPS:	-30.239882, 153.180522
Depth:	Approximately 15m
General Currents:	NE winds
Sheltered or Exposed:	Exposed
Entry and Egress:	Boat Dive
Benthos / Substratum Composition:	Coral Reef, no macroalgae
<i>Dominant Marine Species Identified:</i>	<i>Centrostephonus</i>
Hazards Identified:	Remote Site. Bommie at 3m near site.
Closest Medical Institution:	Coffs Harbour Base Hospital (02) 6656 7000 345 Pacific Highway
Additional Special Requirements:	Dive site is more than 2hours from a Recompression chamber so must dive according to AS2299 restrictions regarding maximum dive time and end pressure group. Good to take extra Oxygen
Nearest Recompression Chamber:	Wesley Hospital Ph (07) 3371 6033 Ground Floor Suite 53 Chasley street, Auchenflower, Brisbane, Qld, 4066 (4 hours 24 minutes away by car)
Directions:	Coffs Harbour Boat Ramp. From Pacific Highway drive down Harbour Drive which turns into Marine drive. Turn right onto Jordan Esplanade. Boat ramp is on the left after 200m.



Directions to jetty:

